



CERTIFIED IMPACT & TRANSPARENCY REPORT 2025

See the funds impact	03	The funding process	20
Community groups in action	05	Our change makers	24
About certified renewable energy	06	View on our website	→

Decarbonising Aotearoa together

Welcome to our 2025 Impact and Transparency Report on our Certified Renewable Energy product.

Annual reports tend to be mostly about numbers, and the numbers are here. But this report is just as much about what communities do with the funding they receive. So you'll find the figures, and you'll find the stories behind them.

These stories show the power of collective effort. Climate change won't be solved by a single person, policy, community, or company. That's why we partner with our Certified customers to decarbonise communities around Aotearoa New Zealand, in keeping with our purpose: clean energy for a fairer and healthier world.

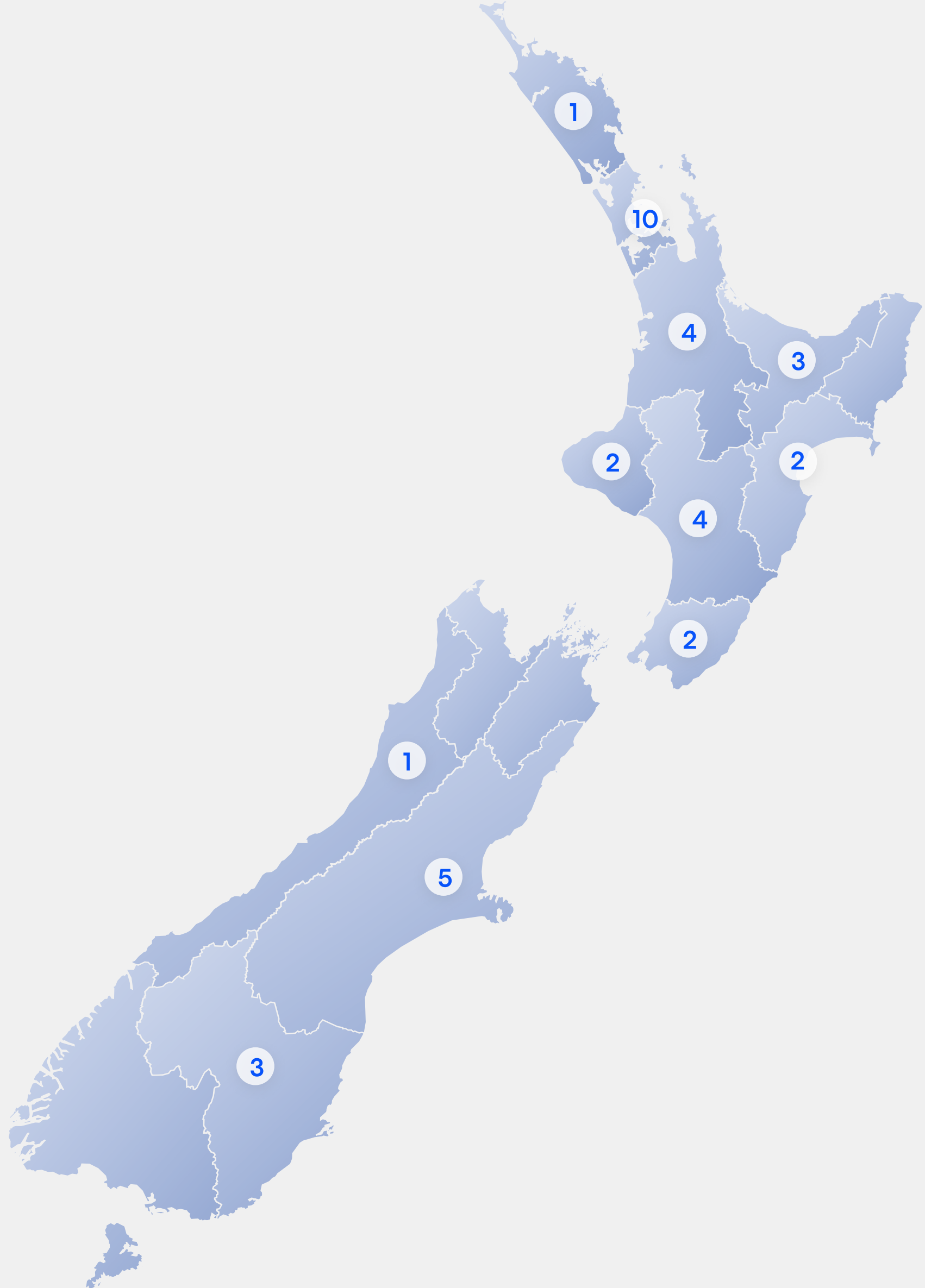
In 2025, we invested more than \$1.8 million into 37 community projects through our Community Decarbonisation Fund. Powered by sales of our Certified Renewable Energy product, the Fund helps community groups complete decarbonisation projects without diverting funding from their core work.

Read on to see what these groups are doing across the country, and what the funding is making possible.

Transforming communities in 2025

37
COMMUNITY GROUPS
ACROSS AOTEAROA

\$1.8
MILLION IN FUNDING

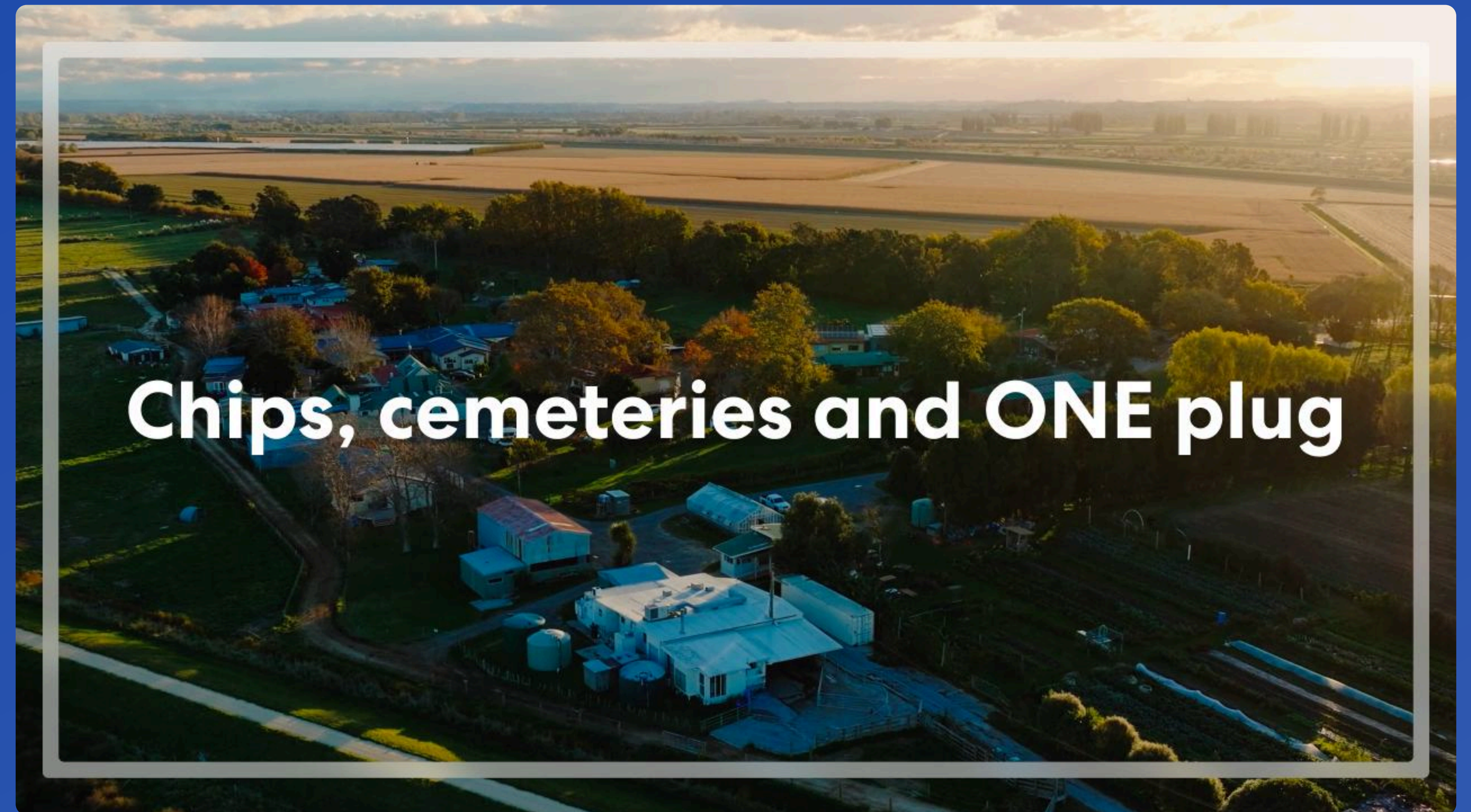


Previous years

Year	2022	2023	2024	2025
Funding (Million)	\$0.333M	\$1.1M	\$1.5M	\$1.8M
Community Groups	05	14	24	37

Powering change across Aotearoa

Each year, the majority of the net proceeds from Meridian's Certified Renewable Energy product are distributed to community groups across Aotearoa. The fund helps them take real steps toward a lower- carbon future, without diverting from the important work they already do. See why the numbers are only part of the story.



Chips, cemeteries and ONE plug

Powering change

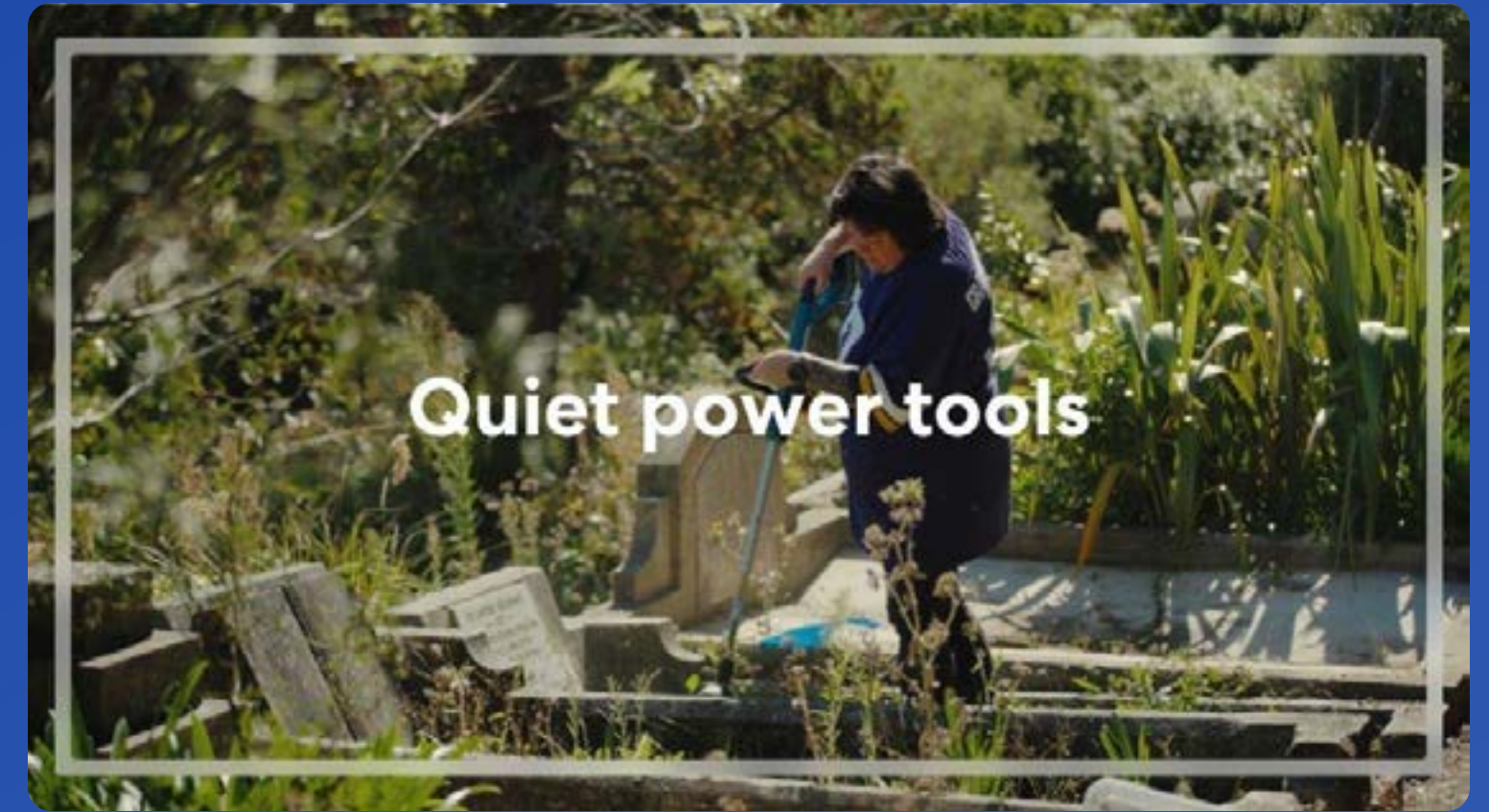


Helping our community

From electric delivery vans to solar-powered swimming pools, see how this year's Community Decarbonisation Fund recipients are putting their funding to work in their communities.



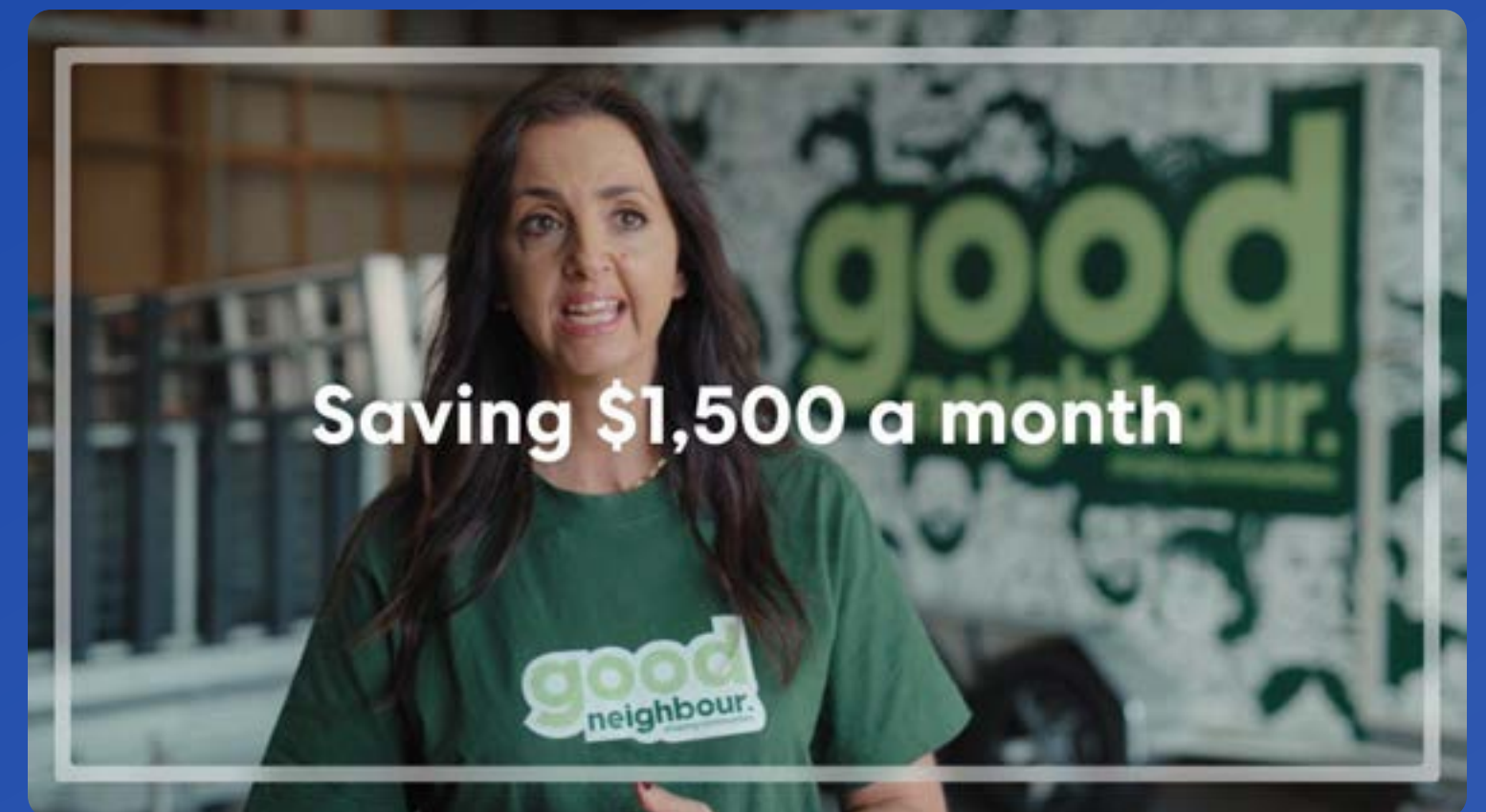
Just Zilch



The Graveyard Shift



Hōhepa Hawke's Bay



Good Neighbour Aotearoa



Renewable Energy Certificates (RECs)

The emission of greenhouse gases from fossil fuel electricity generation is a major driver of global climate change.

While Meridian already generates energy from 100% renewable sources, we know that is only part of the picture. Climate change is a global challenge, and meaningful progress will take collective action.

A range of internationally agreed initiatives have been developed to support that action, and Renewable Energy Certificates (or RECs) are one of them. At Meridian, our REC programme is called Certified Renewable Energy, also known as Certified.

How it works

The Certified electricity you buy from Meridian is matched to the power put into the grid by our Certified hydroelectric power station and wind farms, which are independently verified by BraveTrace as 100% renewable and releasing zero carbon emissions.

That process earns you internationally recognised Renewable Energy Certificates, which allow you to report your market-based Scope 2 emissions as zero (using the market-based reporting methodology, in accordance with the GHG Protocol's Scope 2 Guidance).

What makes Certified stand out is that 100% of the net proceeds are reinvested into Meridian's Decarbonisation Fund. It's an initiative set up to help community groups and businesses actively reduce their carbon emissions.

To date, we've certified 4,281 GWh of electricity^[1] for 231 Certified Renewable Energy customers, which has in turn generated \$4.73 million for the Community Decarbonisation Fund.

Community groups and organisations can apply for funding from the Community Decarbonisation Fund by providing key project information like a quote, a basic plan and some details that allow us to assess the project's emissions impact.

Eligible Certified energy customers can also apply for the Business Decarbonisation Fund, which empowers them to use 50% of the charges they pay for Certified Renewable Energy certificates to fund their own eligible electrification projects, with the remaining net proceeds from the charges they pay going to the Community Fund.

[1] VERIFIED BY BRAVETRACE

The big energy mix

Aotearoa generally has around 85% renewable energy circulating through the grid, but because all electricity is distributed through the same national grid, there's no way of knowing whether the electricity you're using comes from renewable sources.



Meridian is a gentailer, meaning we both generate and retail electricity to households and businesses. We're proud to generate our electricity from 100% renewable sources: wind, water and sun.

Once the electricity we generate enters New Zealand's grid, it flows through a shared network of infrastructure and powerlines to wherever it's needed.

In 2025, 88% of the electricity generated in Aotearoa came from renewable sources like ours.^[1] But that doesn't mean all of New Zealand's electricity is always 88% renewable. Everyone receives a mix of renewable and non-renewable electricity from the grid. That mix changes throughout the day and across the year, depending on demand and which generation sources are being used at the time.

Renewable Energy Certificates, or RECs, do not change the electricity flowing to a customer. Instead, they provide proof that the electricity a Certified customer purchases from us has been directly matched by electricity generated from our BraveTrace-verified 100% renewable generation assets. Certified customers can then report their market-based Scope 2 emissions as zero.

We also plan to build more renewable generation and certify more assets over time, helping us increase the amount of Certified Renewable Energy we can offer customers while contributing to a more renewable energy mix overall.

[1] SOURCE: NEW ZEALAND TRADE AND ENTERPRISE (NZTE).

All about emissions

There are internationally accepted ways of reporting on the different types of greenhouse gas emissions generated by a company or organisation:

Scope 1

Emissions are direct greenhouse gas emissions from sources a company owns or controls. This includes emissions from fuel combustion in boilers, furnaces, vehicles, etc.

Scope 2

Emissions are indirect emissions from the generation of electricity, steam and heating a company uses.

Scope 3

These emissions are usually the largest portion of a company's carbon footprint, but they're the hardest to define and measure. They include emissions relating to the other products, services and materials the company buys to do its work. They also include the emissions generated when people use their products and services. They cover waste disposal, other investments the company makes and more.

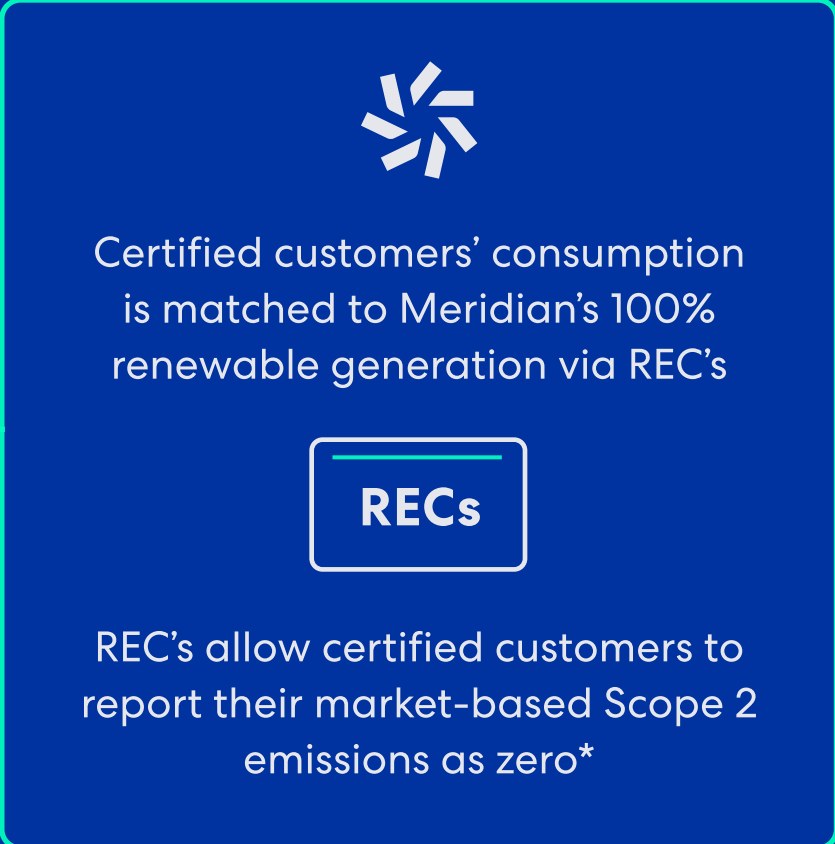
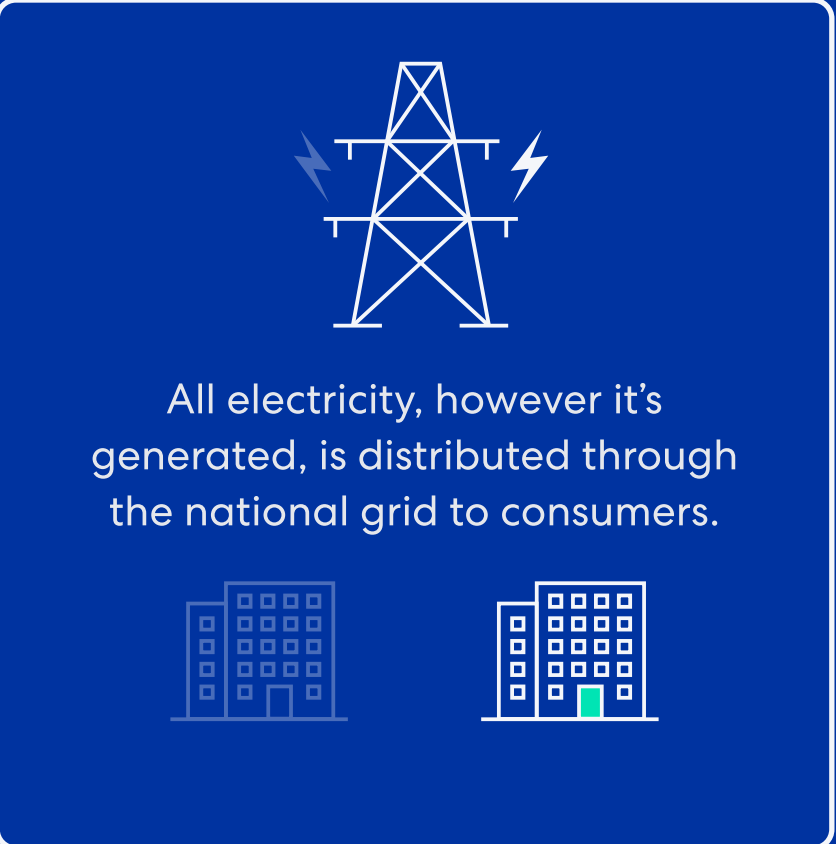
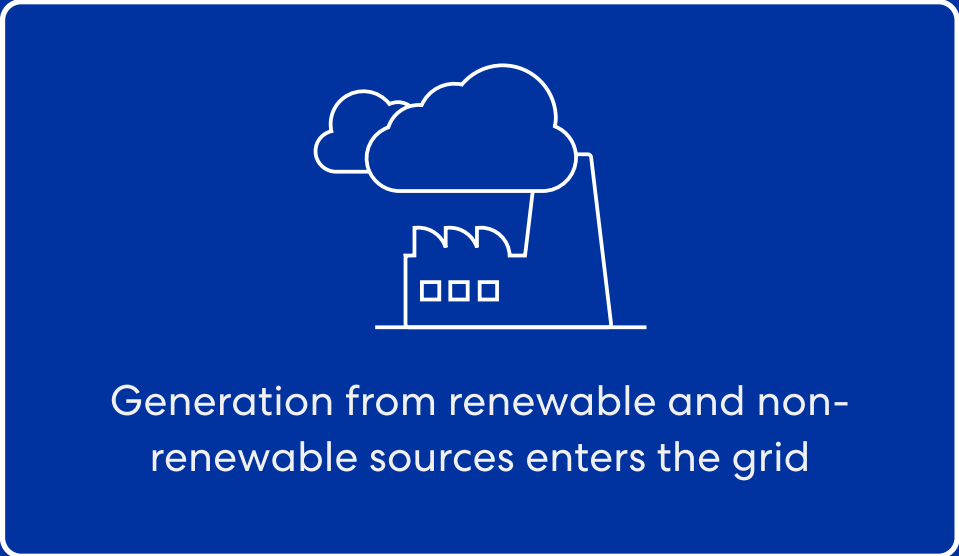


Greenhouse Gas Protocol

Renewable Energy Certificates, including those in our Certified product, enable our customers to report the market-based Scope 2 emissions of the electricity in the certificate as zero – as per the market-based reporting methodology, set out in the [Greenhouse Gas Protocol \(GHG\) Scope 2 Guidance](#).

The GHG Protocol is based on a 20-year partnership between the World Resources Institute (WRI) and the World Business Council for Sustainable Development (WBCSD). It works with governments, industry associations, NGOs, businesses like ours and many other organisations. It's developed comprehensive global standardised frameworks to measure and manage greenhouse gas emissions.

How Certified works



100%

of net proceeds from Meridian's Certified product



We're committed to doing good things with our energy and helping you do good things with yours.

NZSki - Mt. Hutt Ski Fields

From electric delivery vans to solar-powered swimming pools, see how this year's Community Decarbonisation Fund recipients are putting their funding to work in their communities.



Huge amounts of hot chips

NZSki - Mt. Hutt Ski Fields



Our Certified assets

Aotearoa generally has around 85% renewable energy circulating through the grid, but there's no way of knowing if the electricity you're using comes from renewable sources.

4,281

GWH OF CERTIFIED ELECTRICITY TO DATE

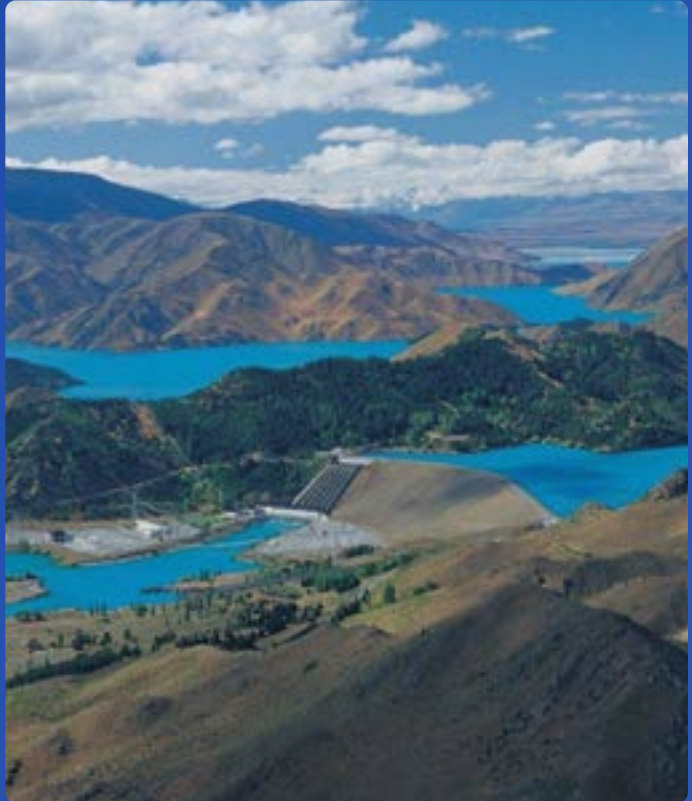
231

CERTIFIED CUSTOMERS

\$4.73m

ALLOCATED TO THE COMMUNITY DECARBONISATION FUND

The electricity generating facilities we have certified for this process:



BENMORE HYDRO STATION



TE UKU WIND FARM



BROOKLYN WIND TURBINE



WEST WIND FARM



HARAPAKI WIND FARM



MILL CREEK WIND FARM



WHITE HILL WIND FARM



Meridian Decarbonisation fund

The Meridian Decarbonisation Fund consists of a business fund and a community fund. The business fund empowers Certified customers who meet specific criteria to use 50% of their REC charges to fund their own eligible electrification projects. However, most of the funding goes into the community fund to support grassroots community projects that reduce carbon emissions and provide a tangible positive impact to the communities they serve.



Community Decarbonisation Fund

We're taking our role in helping Aotearoa reach net-zero carbon emissions by 2050 seriously. We want to accelerate decarbonisation across the nation and help others do the same. It isn't just about funding; it's about empowering. Prioritising decarbonisation is hard for many community groups. While they'd love to invest more in reducing carbon emissions, they need to prioritise their limited funding towards the important work they do.

The Community Decarbonisation Fund is designed to help them on their sustainability journey. Since 2022, more than 77 community projects have received almost \$4.73 million in funding. From installing solar panels and batteries, to purchasing EVs and electrifying boilers, the fund helps communities reduce carbon emissions and move toward a more sustainable future.

To be eligible for funding projects must:

- result in reduced greenhouse gas emissions;
- be an electrification project or lead to the creation of new renewable generation;
- contribute directly to communities across Aotearoa; or
- be one that either wouldn't have occurred without the funding or a project that will occur sooner because of the funding.

[Register your interest in the fund here.](#)



Business Decarbonisation Fund

The Meridian Decarbonisation Fund was set up primarily to fund community-based decarbonisation projects through the Community Decarbonisation Fund. However, we're also working with eligible business customers to support their decarbonisation projects.

The Meridian Decarbonisation Fund consists of a business fund and a community fund. The business fund empowers Certified customers who meet specific criteria to use 50% of the charges they pay for their Renewable Energy Certificates (RECs) to fund their own eligible electrification projects.

For a business and its decarbonisation initiative to be eligible, it needs to meet the following criteria:

- your Certified annual consumption must be more than 5 GWh per production year;
- the project or initiative is technically feasible (for example, your roof must be suitable for the installation of solar panels);
- the project or initiative will result in a reduction in greenhouse gas emissions in Aotearoa; and
- Meridian considers that the project or initiative complies with policies on the acceptance of RECs.

T&G GLOBAL - CASE STUDY

NZSki - Mt. Hutt Ski Fields

NZSki operates three South Island ski areas, including Mt Hutt. It's regularly one of the first ski fields in the southern hemisphere to open each season. With a goal of reaching carbon neutrality by 2030, the business has been working through a range of practical decarbonisation initiatives.

Having been a Certified Renewable Energy customer since 2023, NZSki has used the Business Decarbonisation Fund over multiple years to complete two significant projects at Mt Hutt.

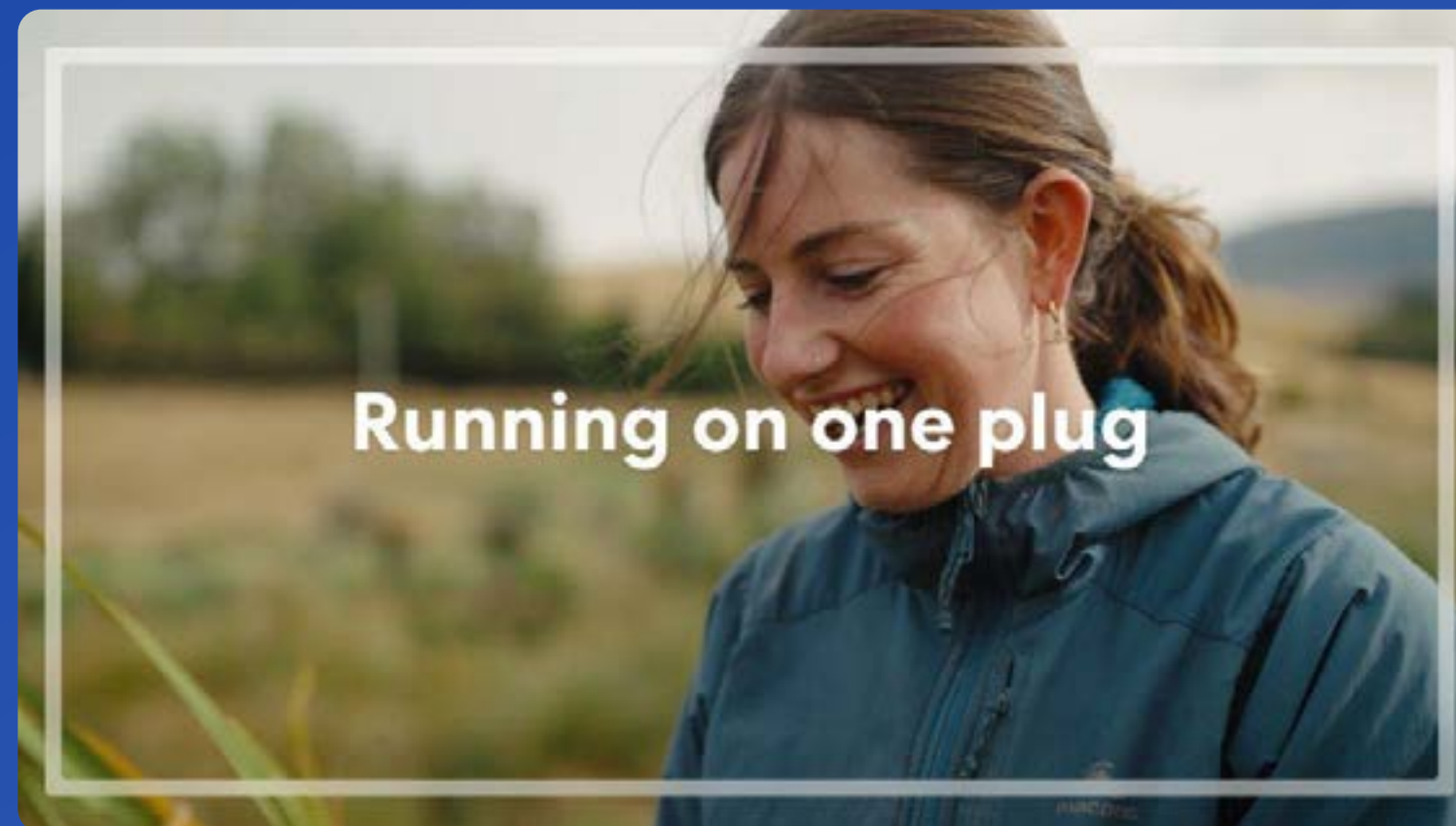
The first was replacing the ski field's deep fryers. Mt Hutt is a serious food and beverage operation serving around 4,000 visitors a day during the season, and few things are as sought-after as hot chips on a cold day. The kitchens ran on LPG. At altitude and in cold temperatures, that meant heavy cylinders moving up and down an icy access road. As the fryers neared end of life, switching to electric made obvious sense. Through the Business Decarbonisation Fund, the upgrade was effectively cost-neutral.

The second project focused on staff accommodation in Methven: 25 cabins used by workers through the winter season. Rather than draw entirely from the grid, NZSki installed solar thermal panels capable of capturing around 80% of solar energy as heat, meaning staff can get hot water without adding pressure to the grid at peak times.

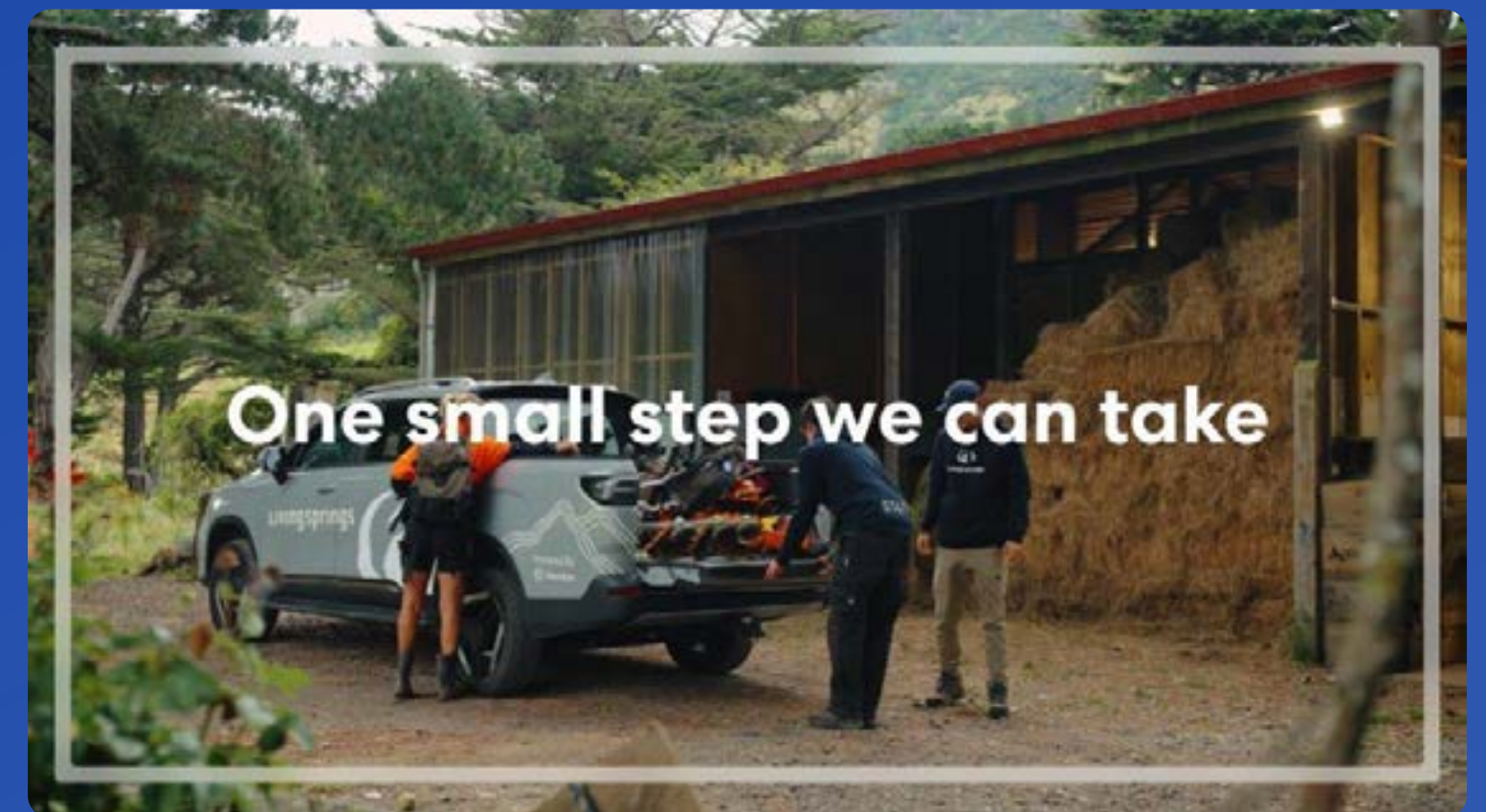
For NZSki, hitting their goal of carbon neutral by 2030 is about making one practical decision at a time.

Helping our environment

From solar-assisted seed propagation to electric weed eaters, see how this year's Community Decarbonisation Fund recipients are using their funding to nurture and regenerate their local environments.



Whakatipu Reforestation Trust



Living Springs



Our process

Applications for the Community Decarbonisation Fund opened in August 2025 through social media, email and community networks. We wanted to make sure that community groups of all sizes and experience could put forward a strong application, so we kept the application simple and accessible. Applicants needed to provide key project information like a quote, a basic plan and some details that would allow us to assess the project's emissions impact.

Once applications closed, our team reviewed each project's eligibility and alignment with the fund's goals. From 232 applications, we shortlisted 69 projects. Those shortlisted were then invited to submit a short video explaining their project goals, what outcomes they hoped for and why the project matters to their community. Of the 69 shortlisted applicants, 37 received funding from the Community Decarbonisation Fund.

How we decided on funding

Based on past funding rounds and decarbonisation trends across Aotearoa, we expected applications for projects like solar, EV charging and boiler conversions. We wanted a consistent way to assess them, particularly how each one supports the goals of Meridian's Certified Renewable Energy product.

So we worked with BraveTrace, our Certified partner and the operator of the New Zealand Energy Certificate System (NZECS), to help calculate the potential emissions impact of each project.

But impact is not just about numbers. That's why 40% of each decision was based on panel discussion, drawing on local knowledge, lived experience and the wider benefits a project could bring.

What we evaluated

- **Total avoided emissions (30%):** the estimated lifetime carbon reduction, measured in tonnes of CO2 equivalent
- **Cost efficiency (10%):** how much avoided emissions each dollar of funding would help achieve
- **Feasibility (10%):** how realistic the project is, based on the design and quotes provided
- **Delivery time (10%):** how quickly the project could happen, especially if funding would help bring it forward
- **Social, economic and environmental impact (40%):** the broader benefits for the community. Applicants were asked to submit a short video so they could explain this in their own words.

Doing better

We know there is always room to improve. So each year, we listen to feedback and make changes to the process. We want the Community Decarbonisation Fund to be as fair, accessible and useful as possible, especially for groups applying for funding for the first time.

We will keep improving how we support applicants, simplify the process, and make sure decisions reflect the real impact projects can have. That includes refining our criteria, providing clearer guidance, and offering more support.

Meet the panel

The Community Decarbonisation Fund panel draws from external experts, senior Meridian leaders, and specialists from across the renewable energy and sustainability sector. A new panel is appointed each year, chosen for their commitment to reducing emissions, their support for renewable energy, and the change they're already powering in their own communities.

This year, for the first time, three Certified Renewable Energy customers joined the panel. As well as bringing new perspectives to the process, it gave them a direct say in how the proceeds from their own Certified purchases were allocated, connecting them more closely to the fund their power purchasing helps sustain.



Danny Wilson

HEAD OF RETAIL STRATEGY & COMMERCIAL,
MERIDIAN ENERGY

Danny helps oversee Meridian's Community Decarbonisation Fund as part of his wider role shaping Meridian's retail strategy and commercial activity. He brings both governance experience and a practical understanding of the steps that help homes and businesses reduce emissions.



Shaun Goldsbury

CEO, BRAVETRACE

Born and raised in Te Tairāwhiti, with Ngāti Porou and Te Aitanga a Hauiti heritage, Shaun brings both energy market expertise and a strong interest in the resilience of rural communities. His perspective is shaped by the role renewable energy can play in supporting communities facing isolation, disruption and the impacts of extreme weather.

Meet the panel



Rotdany Harvey

PROPERTY AND PROCUREMENT MANAGER, SUSTAINABILITY LEAD, VEHICLE TESTING NEW ZEALAND

Rotdany brings more than 15 years' experience leading property, project and sustainability initiatives across large organisations. Her work includes practical decarbonisation projects such as solar installations and EV charging rollout across the VTNZ portfolio, giving her a strong implementation lens on the panel.



Natalie Dunn

HEAD OF GROUP STRATEGY AND SUSTAINABILITY, THE CO-OPERATIVE BANK

Natalie's experience spans strategy, transformation and sustainability, including a key role in strengthening practices such as B Corp and Toitū net carbon zero certification. She is interested in how organisations can balance purpose with long-term sustainability and support practical decarbonisation across Aotearoa.



Josh Barclay

SUSTAINABLE DEVELOPMENT MANAGER, WHITEHAVEN WINES

Josh works on practical systems that support environmental performance, compliance and long-term resilience. With a background spanning government, NGOs and industry, he offers a grounded perspective on decarbonisation and the kinds of projects that can deliver lasting value for communities.

Our change-makers

Cancer Society of NZ Manawatu Centre Inc

The Cancer Society Manawatū supports people affected by cancer with transport to treatment, counselling, support groups and practical help. The funding is supporting solar installation at the Cancer Society Centre, reducing power costs so more resources can go toward care and support in the community.

FUNDING RECEIVED

\$38,464

TYPE

Solar

Catalytic Foundation

The Catalytic Foundation helps charities across Aotearoa by sourcing and redistributing surplus goods and essential items such as clothing, bedding, school supplies and hygiene products. The funding is helping the team add a low-emission van so it can collect and deliver more goods while reducing its carbon footprint.

FUNDING RECEIVED

\$22,170

TYPE

EV

Christchurch Methodist Central Mission

The Christchurch Methodist Central Mission provides free social services, aged care and palliative support for vulnerable people and whānau from all walks of life. The funding is helping upgrade the hot water boiler at WesleyCare, its 108-room hospital and rest home, cutting LPG use, lowering emissions and reducing running costs.

FUNDING RECEIVED

\$50,000

TYPE

Boiler

Delta Community Support Trust

Delta Community Support Trust supports East Christchurch communities through practical help for families, programmes for older adults, and friendship and skill-building activities for people with intellectual disabilities. The funding is helping Delta replace its three ageing vans with an EV, lowering emissions while supporting service delivery across Canterbury.

FUNDING RECEIVED

\$43,059.34

TYPE

EV

Etū Rākau Charitable Trust

Etū Rākau Charitable Trust is a Māori-led organisation focused on kai sovereignty, kaitiakitanga and community innovation, with practical work ranging from māra kai and composting to zero-waste initiatives in Auckland. The funding is helping replace an ageing petrol ute with an EV, giving the trust safer, more reliable transport for kai distribution, mara kai support and waste recovery.

FUNDING RECEIVED

\$39,990

TYPE

EV

Good Neighbour Aotearoa Trust

Good Neighbour Aotearoa supports communities across the Bay of Plenty through food redistribution, firewood delivery, community meals and whānau programmes such as Rangatahi Ora. The funding is helping install solar and battery storage at their community hub, reducing power costs and strengthening the long-term sustainability of these services.

FUNDING RECEIVED

\$45,250

TYPE

Solar + Battery

Green Effect Trust/Trees for Canterbury

Trees for Canterbury creates opportunities for disadvantaged people through supportive training and meaningful work, while also partnering with schools and communities on environmental education and restoration. The funding is helping install solar at its nursery, reducing power costs and backing work that connects employment, education and regeneration.

FUNDING RECEIVED

\$15,565

TYPE

Solar

Hōhepa Hawke's Bay

Hōhepa Hawke's Bay supports people with intellectual disabilities through homes, a school, day services and meaningful work. The funding is helping replace a diesel bore pump with a high-efficiency electric pressure pump for irrigation at its biodynamic Clive dairy farm and community gardens, cutting emissions and improving long-term reliability.

FUNDING RECEIVED

\$28,142.27

TYPE

Electric Bore Pump

Hospice Eastern Bay of Plenty

Hospice Eastern Bay of Plenty provides free specialist palliative care and whānau support across a large and diverse region, with the support of more than 250 volunteers. The funding is helping add a hybrid 4WD outreach vehicle to the fleet, improving access for remote whānau while reducing emissions and supporting more sustainable care across the region.

FUNDING RECEIVED

\$54,439.18

TYPE

EV

Our change-makers

Hospice Whanganui

Hospice Whanganui delivers free specialist palliative care across Whanganui, Ruapehu and South Taranaki, providing round-the-clock support with most care delivered in patients' homes. The funding is helping install solar, reducing energy costs so more of the hospice's resources can go toward caring for patients and whānau.

FUNDING RECEIVED

\$50,998

TYPE

Solar

Kootuitui Trust

Kootuitui Trust works to address inequity and improve long-term outcomes for young people and whānau in South Auckland through education, health, homes and financial wellbeing. The funding is helping add an EV so the trust can keep delivering whānau-centred support across the community with lower emissions.

FUNDING RECEIVED

\$49,485

TYPE

EV

Life Education Trust Heartland Otago Southland

Life Education Trust Heartland Otago Southland delivers the Healthy Harold programme to schools across a large rural region, helping children in Years 0-8 make positive choices for their physical and mental wellbeing. The funding is enabling the purchase of an EV and charger, helping educators reach more schools while reducing travel emissions.

FUNDING RECEIVED

\$76,660.05

TYPE

EV + Charger

Lifekidz Trust

Lifekidz Trust supports children, young people and young adults with high and very high needs disabilities through after-school, holiday and adult day programmes. The funding is helping the trust switch to an EV, reducing running costs and emissions while supporting safe, consistent care for participants from across Auckland.

FUNDING RECEIVED

\$48,675.48

TYPE

EV

Living Springs

Living Springs is a not-for-profit outdoor education and environmental centre on Banks Peninsula, welcoming schools, health camps, community groups and volunteers. The funding is supporting the purchase of an electric ute and charger, replacing older vehicles and making it possible to adopt electric tools, improving safety and showing visitors what decarbonisation can look like in practice.

FUNDING RECEIVED

\$80,947.60

TYPE

EV + Charger

Matuku Reserve Trust

Matuku Link is a leading community wetland conservation organisation in West Auckland, restoring Te Henga Wetland and surrounding native forest while connecting people with nature through conservation, education and volunteer action. The funding is helping staff and volunteers switch to an EV for site visits, reducing emissions and supporting climate resilience work across the wider landscape.

FUNDING RECEIVED

\$102,600

TYPE

EV

MPHS Community Trust

MPHS Community Trust is a community development organisation in West Auckland, supporting diverse communities through environmental programmes, affordable goods and hands-on learning spaces. The funding is helping add an electric cargo van to move donations, keep more goods out of landfill, support partner organisations and show what community-led decarbonisation can look like in practice.

FUNDING RECEIVED

\$115,133.10

TYPE

EV

New Settlers Family and Community Trust

New Settlers Family and Community Trust (NFACT) supports refugee-background families to rebuild their lives in Aotearoa through wraparound services including settlement support, wellbeing programmes and skills development. The funding is helping put an electric van on the road for its mobile Repair Cafés, helping more communities repair, reuse and waste less across Auckland.

FUNDING RECEIVED

\$32,000

TYPE

EV

On The House Charitable Trust

On The House is a Taranaki charity that rescues surplus food and gets it to people in need, reducing both food waste and food insecurity across the region. The funding is helping add a refrigerated EV truck so the team can collect more temperature-sensitive food, meet growing demand and expand its reach with lower emissions.

FUNDING RECEIVED

\$130,000

TYPE

EV

Our change-makers

Richmond Community Garden Trust

MPHS Community Trust is a community development organisation in West Auckland, supporting diverse communities through environmental programmes, affordable goods and hands-on learning spaces. The funding is helping add an electric cargo van to move donations, keep more goods out of landfill, support partner organisations and show what community-led decarbonisation can look like in practice.

FUNDING RECEIVED

\$30,096.41

TYPE

Solar

Runanga Community Trust

Runanga Community Trust manages the community pool in Rūnanga, after taking over ownership from the local district council. The funding is helping install solar to reduce operating costs, support the pool's long-term future, and provide emergency power to the neighbouring school, which serves as the community's welfare centre in an emergency.

FUNDING RECEIVED

\$40,434.78

TYPE

Solar

St Chads Communications Centre

St Chads is a life skills learning hub in Rotorua for adults with intellectual disabilities, with programmes that include arts, cooking, volunteering and workplace experience. The funding is supporting solar installation, reducing power costs and giving participants the chance to learn more about renewable energy by seeing it in action.

FUNDING RECEIVED

\$20,782.61

TYPE

Solar

Sustainable Taranaki

Sustainable Taranaki has been the region's leading environmental education provider for more than 30 years, delivering practical sustainability programmes that reach more than 25,000 people each year. The funding is enabling the purchase of an EV van and charger, helping staff travel across Taranaki's rural communities with lower emissions while supporting the hands-on work they deliver.

FUNDING RECEIVED

\$76,475.75

TYPE

EV + Charger

TalkLink Trust

TalkLink provides specialist assistive technology support for people with communication disabilities, helping them connect with whānau, peers, workplaces and communities. The funding is helping transition the vehicle fleet from petrol to electric, reducing travel emissions as staff continue delivering essential support in homes, schools and community settings.

FUNDING RECEIVED

\$35,687

TYPE

EV

Taupō Community Gardens

Taupō Community Gardens is a hub for community wellbeing, food growing and ecological stewardship, where local people can grow fresh produce and learn sustainable gardening practices. The funding is helping replace petrol-powered garden machinery with battery alternatives, reducing emissions and noise while showing what lower-emissions community gardening can look like in practice.

FUNDING RECEIVED

\$4,275

TYPE

Battery powered tools

Te Kauwhata & Districts Information & Support Centre

Te Kauwhata & Districts Information & Support Centre runs Te Kauwhata Community House and Toi Ako Artspace, supporting a connected community through services including food support, counselling, arts therapy and medical transport. The funding is helping add a second EV and charger for community transport, replacing the existing petrol vehicle.

FUNDING RECEIVED

\$58,289

TYPE

EV + Charger

Te Ruruku Pa

Te Rūruku Pā supports kaumātua and whānau with free kai and rongōā (holistic healing), while rangatahi lead māra, seed saving and wider low-waste initiatives in the community. The funding is helping bring in an EV to collect waste, expand composting and deliver food packs with lower emissions, strengthening resilience and low-carbon community systems.

FUNDING RECEIVED

\$131,904.35

TYPE

EV

Te Waipuna Puawai Mercy Oasis Ltd

Te Waipuna Puawai Trust supports West Auckland through kai, environmental education and sustainability initiatives, from weekly kai parcels to restoration and volunteer-led environmental projects. The funding is helping replace a diesel vehicle with an EV, reducing emissions and costs while supporting food distribution, restoration work and stronger climate leadership in the community.

FUNDING RECEIVED

\$161,582.50

TYPE

EV

Our change-makers

The Free Store Charitable Trust (Just Zilch)

Just Zilch is New Zealand's longest-running free store, rescuing surplus food in Palmerston North and redistributing it to people in need across Manawatū-Whanganui. The funding is helping install solar at its Featherston Street site, reducing power costs and supporting the fridges, chillers and day-to-day operations that keep this food rescue work going.

FUNDING RECEIVED

\$33,285

TYPE

Solar

The Graveyard Shift

The Graveyard Shift is a volunteer-led community group that helps restore dignity to graves that would otherwise be lost to overgrowth. The funding is helping replace petrol equipment with battery-powered tools, reducing emissions and noise while making regular maintenance easier for volunteers and modelling sustainable practice within the community.

FUNDING RECEIVED

\$1,468.26

TYPE

Battery powered tools

The Ryder-Cheshire Foundation Manawatu

The Ryder-Cheshire Foundation Manawatū supports adults with physical disabilities through safe homes, respite care and day programmes that foster independence, inclusion and wellbeing. The funding is helping install solar and battery storage at its community hub, reducing energy costs and strengthening the long-term sustainability of these services.

FUNDING RECEIVED

\$34,282.94

TYPE

Solar + Battery

TTB Community Trust

Taupō Timebank builds resilience, skills and community connection through practical programmes including outdoor education, life skills for rangatahi, sustainability workshops for adults and garden-to-table cooking. The funding is helping install solar and battery storage, reducing energy costs and powering the kitchen and wider community facilities.

FUNDING RECEIVED

\$33,730.99

TYPE

Solar + Battery

WAI Wānaka

WAI Wānaka works with landowners, schools, businesses, councils and community groups to develop and deliver programmes that improve ecosystem health, reverse biodiversity loss and protect freshwater. The funding is supporting the purchase of an EV so staff can deliver environmental projects and education activities across the region with lower emissions.

FUNDING RECEIVED

\$64,990

TYPE

EV

Wesley Community Action

Wesley Community Action works with whānau across the Wellington region on financial stability, housing, good kai and community wellbeing. The funding is supporting the purchase of an EV van for kai sovereignty and food recovery projects in Porirua, including produce transport and food scrap collection.

FUNDING RECEIVED

\$36,504

TYPE

EV

Whakatipu Reforestation Trust

Whakatipu Reforestation Trust propagates and grows native plants through its volunteer-run community nursery, helping local people restore public conservation land. The funding is helping replace an aged solar system with a new one that can properly power the nursery, future-proofing the site as it grows while keeping ongoing costs low.

FUNDING RECEIVED

\$6,730

TYPE

Solar

Whangamata Community Swimming Pool

Whangamatā Community Swimming Pool is a community-built, community-owned facility that gives locals and visitors year-round access to swimming, water safety and learn-to-swim programmes. The funding is supporting solar and energy upgrades, reducing operating costs so the pool can stay open and affordable for everyone.

FUNDING RECEIVED

\$30,487

TYPE

Solar

Whare Āwhina

Whare Āwhina is a kaupapa Māori provider in Tai Tokerau, supporting local people through community law, social support, free meals, food rescue and kai for whānau in need. The funding is helping the organisation switch to an EV, so it can keep delivering these services across the region with lower transport emissions.

FUNDING RECEIVED

\$28,541.50

TYPE

EV

Woven Earth Trust

Woven Earth helps survivors of family violence and their children rebuild their lives by providing the furniture and household items that turn an empty house into a home. The funding is supporting the purchase of a lower-emission seven-seater vehicle so volunteers can collect donations, complete house set-ups and do this work with lower fuel use.

FUNDING RECEIVED

\$55,394.12

TYPE

EV

What's next?

For Meridian

As the country's largest renewable electricity generator, we are continuing to invest in initiatives that will help decarbonise Aotearoa. Our nationwide public EV charging network is a key focus, as is the growth of our Certified Renewable Energy programme.

We're also working with iwi, the Department of Conservation and other organisations to find ways our Power Up Community Fund and our Community Decarbonisation Fund can help support local communities, protect native plant and animal life and preserve our environment.

For the fund

We want to keep growing the impact of the fund, and that means both growing our Certified customers and processing more applications. Put simply, the more businesses purchasing our Certified Renewable Energy product, the more impact the Community Decarbonisation Fund can have.

We'll keep improving how we support applicants, simplify the process, and make sure decisions reflect the real impact projects can have.

For 2026, we estimate that the fund will have more than \$2 million available for successful projects. Applications will open later in the year.

Renewable energy pipeline

Solar



TOTAL 2.4GW

Wind



TOTAL 2.1GW

Battery Storage



TOTAL 0.2GW

2026	RUAKĀKĀ	250MW		
2027	TE RAHUI	200MW	TE RERE HAU	170MW
2028	WAIKATO	100MW	MT MUNRO	90MW
2029	SWANNANOA	200MW		
2030	WESTERN BAYS	250MW		
2031	MANAWATU	100MW	WAINU	350MW
2032	CANTERBURY	150MW		
2033	WAINU	200MW	MANAWATU	200MW

Thank you to all of our Certified customers. Let's share what we've achieved and invite others to walk the path with us.

[Join certified →](#)